

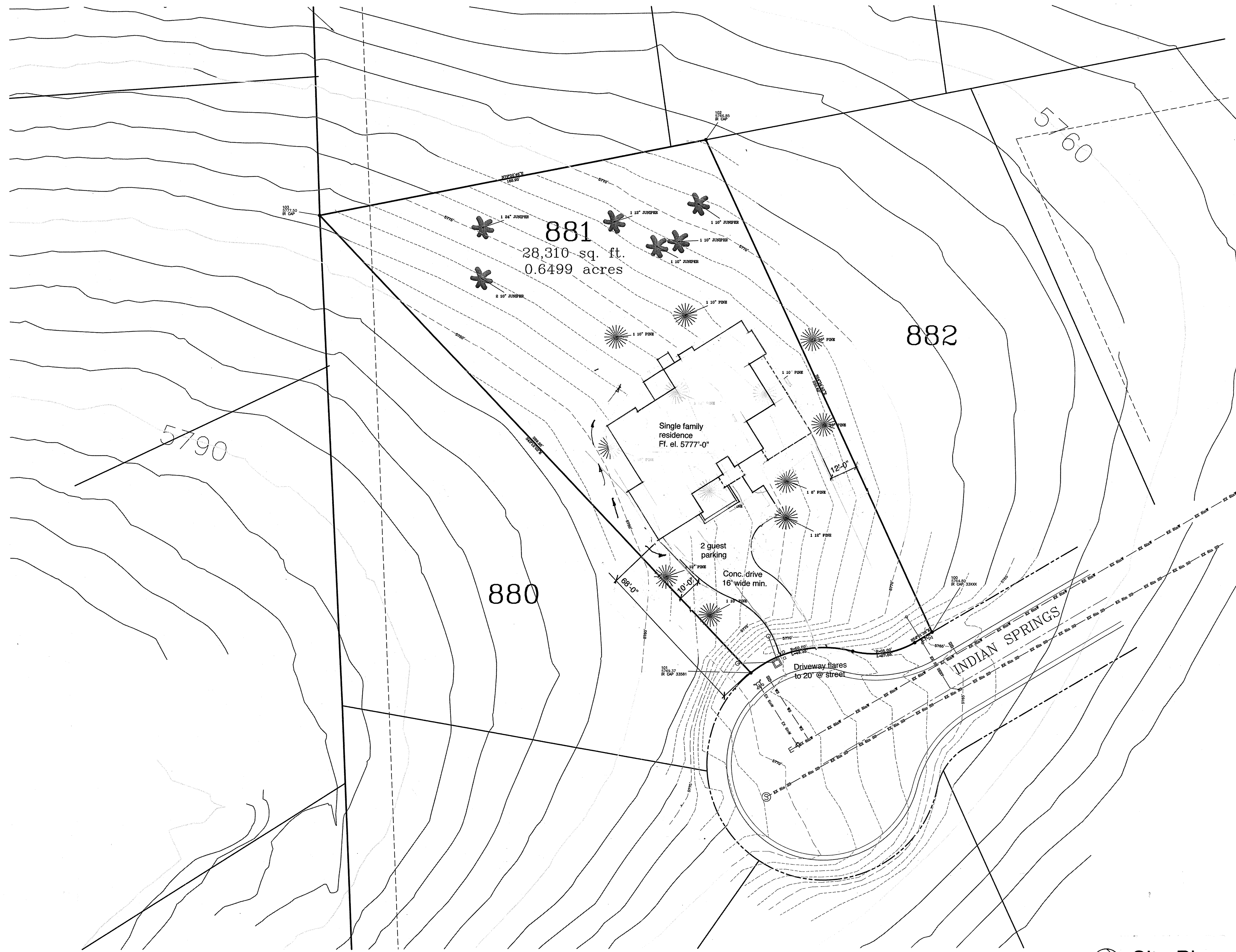


CRYSTAL CREEK HOMES INC.

Thoughtfully Planned  
Carefully Crafted

700 S. Montezuma Street  
Prescott, AZ 86303  
928-445-3200  
1-800-553-0542  
928-771-9357 Fax

This drawing is considered proprietary. It is not to be reproduced, nor is the information contained to be used to produce products, unless written consent is first obtained from Crystal Creek Homes, Inc.



Sheet title:

Site Plan

Sheet:

of:

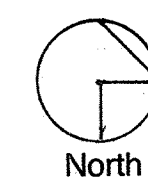
Date:

Revision:

...Canyon Trace  
Residential Design

Residential Design

Norman L. Bechtold  
Architect (Retired)  
1025 N. Cloud Cliff Pass  
Prescott Valley, AZ 86314  
928-237-5575 Studio  
928-227-5592 Cell  
shlphx@cableone.net



Site Plan

Scale: 1" = 20.0'